



90 Wordsworth Street

Hove BN3 5BH

Offers In Excess Of: £475,000

- TWO DOUBLE BEDROOMS
- MODERN BATHROOM
- LIVING ROOM
- KITCHEN/BREAKFAST ROOM
- CLOAKROOM
- BASEMENT WITH TREMENDOUS POTENTIAL
- SOUTH FACING PATIO GARDEN
- PRESENTED IN EXCELLENT ORDER

This charming two double bedroom terrace property is presented in excellent order throughout with a modern bathroom, separate living room and good size kitchen/breakfast room leading onto the South facing patio garden. The house features a basement that is accessed via the garden and runs the full depth of the property with plumbing for washing machine and an ideal area for storage.

Situated in the favoured 'Poets Corner' district of Hove being within walking distance of Hove mainline station and seafront. An array of eateries, cafes and shopping facilities are all within easy reach.

LIVING ROOM Bay window, stairs to first floor, radiator.

KITCHEN/BREAKFAST ROOM Incorporating stainless steel drainer and mixer tap, adjacent wooden worktop, range of cupboards and drawers under, matching eye level wall cupboards, wine rack, integrated fridge freezer, space for gas range cooker, tiled splashback, exposed wood floor.

REAR LOBBY Radiator, sink, door to garden.

CLOAKROOM Low level w.c. with concealed cistern.

BASEMENT Plumbing for washing machine, 'Alpha' gas fired boiler, light and power, radiator.

FIRST FLOOR LANDING

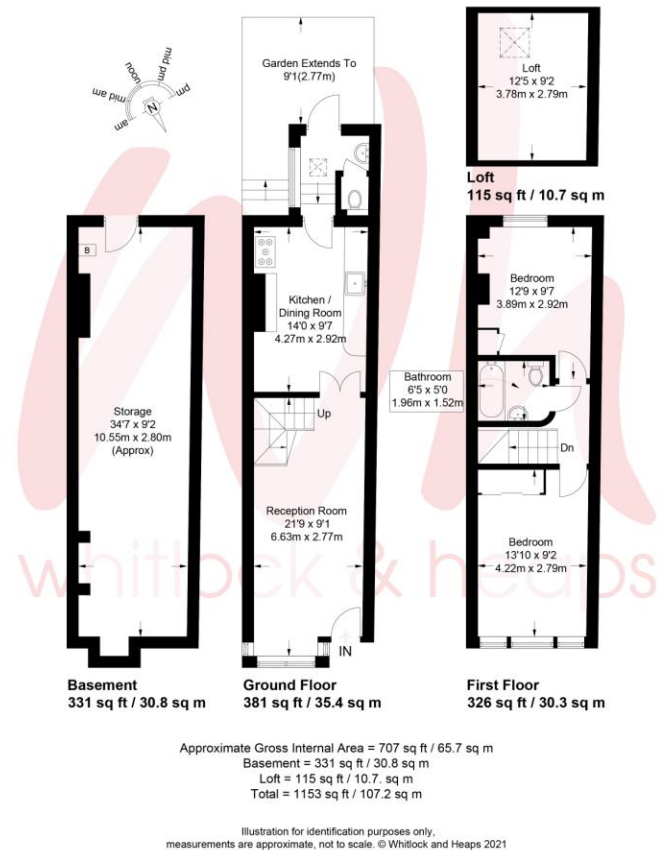
Hatch to loft space, pull down ladder, boarded and shelved with power and light.

BEDROOM 1 Range of fitted wardrobes, radiator.

BEDROOM 2 UPVC double glazed window, radiator, fitted cupboard.

BATHROOM Comprising panelled bath with separate shower over, pedestal wash hand basin, low level w.c., part tiled walls, heated ladder style towel rail.

OUTSIDE SOUTH FACING PATIO GARDEN



Portslade Branch
 48 Boundary Road, Portslade BN3 4EF
 portslade@whitlockandheaps.co.uk
 01273 422706

Hove Branch
 65 Sackville Road, Hove BN3 3WE
 hove@whitlockandheaps.co.uk
 01273 778577



Disclaimer: Whitlock & Heaps have produced these particulars in good faith and they are set out as a general guide. Accuracy is not guaranteed, nor do they form part of any contract. If there is any particular aspect of these details which you require any confirmation, please do contact us, especially if contemplating a long journey. All measurements are approximate. Fixtures and fittings, other than those mentioned above, to be agreed with the seller. Any services, systems or appliances at the property have not been tested.